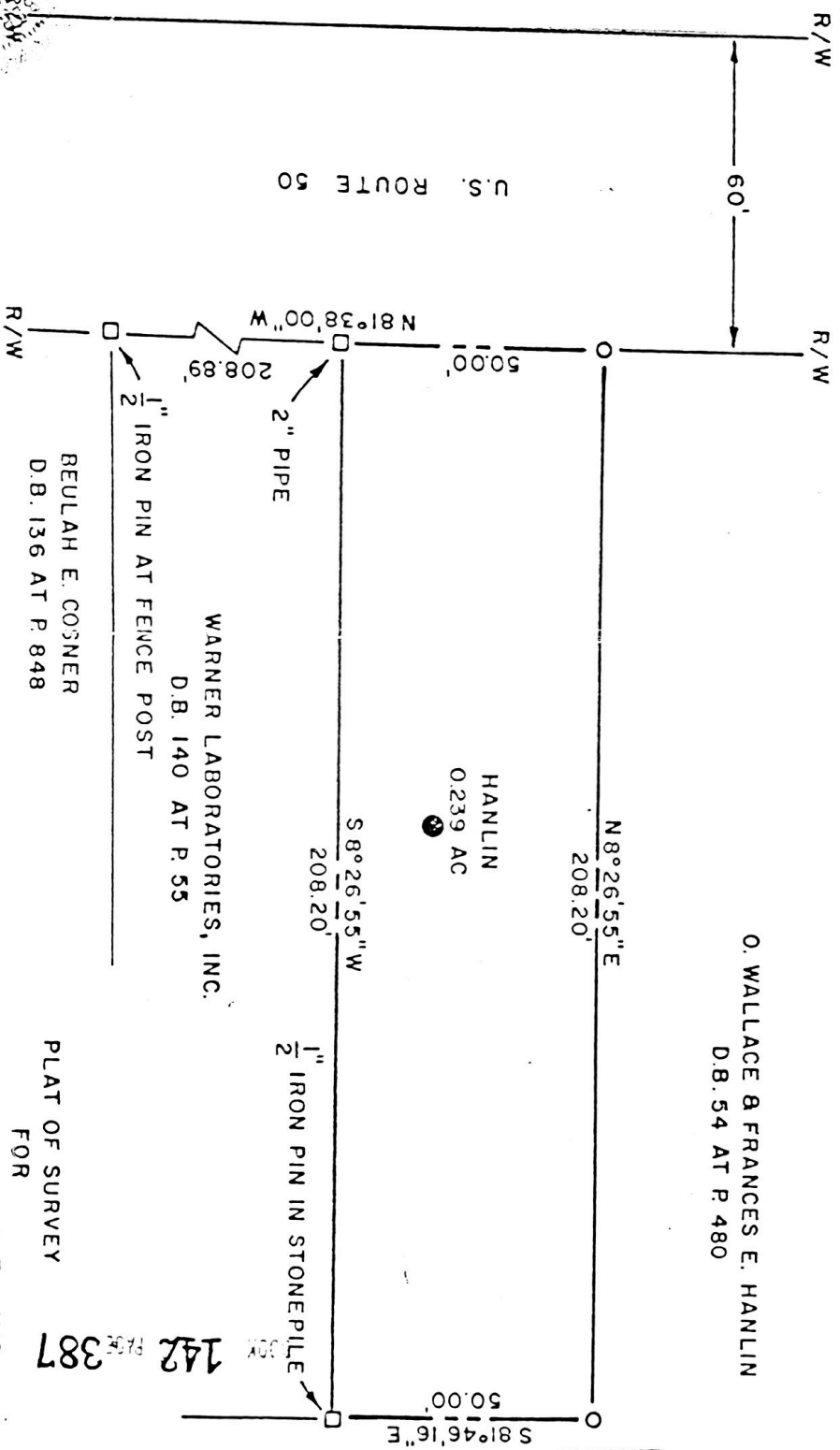


MAGNETIC DECLINATION 4°46' WEST AT OAKLAND, MARYLAND — JUNE, 1983

PART OF PARCEL 18 MAP 144 GRANT COUNTY TAX MAPS



- MONUMENT FOUND
- 1/2" IRON PIN SET

O. WALLACE & FRANCES E. HANLIN
D.B. 54 AT P. 480

HANLIN
0.239 AC

WARNER LABORATORIES, INC.
D.B. 140 AT P. 55

BEULAH E. COSNER
D.B. 136 AT P. 848

PLAT OF SURVEY FOR WARNER LABORATORIES, INC.
UNION DISTRICT WEST VIRGINIA GRANT COUNTY

MAY 14, 1984

SCALE - 1" = 30'

KEVIN F. STEINHILBER, S.L.S. 543

37780

142 387